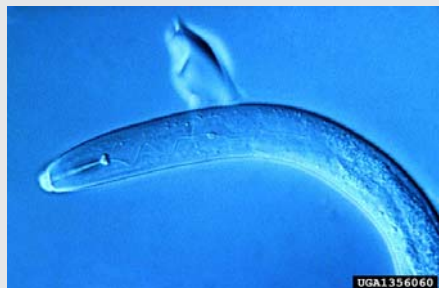


National Updates

Potato Cyst Nematode Detected in U.S.

On April 19, 2006, the USDA in conjunction with the Idaho Department of Agriculture confirmed the discovery of the potato cyst nematode (*Globodera pallida*) in a soil sample collected from an Idaho processing facility. This soil sample was collected as part of the USDA's Cooperative Agricultural Pest Survey.



The anterior part of a second-stage juvenile of potato cyst nematode (*Globodera pallida*). (Photo Christopher Hogger www.invasive.org)

Although the potato cyst nematode is widely distributed in many potato growing areas of Europe, this is the first discovery of the potato cyst nematode in the United States. This nematode has been previously reported in North America only on the island of Newfoundland, Canada.

Symptoms of potato cyst nematode on potato include yellowing, wilting and necrosis of plant tissue. Yield loss can be as high as 80% when left uncontrolled. In addition to potato, the potato cyst nematode can affect other solanaceous plants including tomato, eggplant and some weeds.

More information on potato cyst nematode can be found on the web at: [University of Nebraska-Lincoln Nematology Website](http://www.unl.edu/nematology) [INRA Pest Data Sheet](http://www.inra.gov.au/pests/INRA_Pest_Data_Sheet) [DEFRA Pest Alert](http://www.defra.gov.uk/pest/alert)

Annual Meeting Planning Team

Karen Snover-Clift,
Department of Plant Pathology,
Cornell University

A team has been formed to begin the planning process for the first NPDN Annual Meeting. The team members are currently working on the details of the agenda and the registration process. At this time, no date has been confirmed but dates for the end of January or early February of 2007 are strong possibilities. The meeting will most likely be held in Orlando, Florida.

Continued on page 2.....

Issue Highlights:

- ◆ Potato Cyst Nematode Detected in U.S.
- ◆ IT Updates from the PDIS Development Team
- ◆ Diagnostic Updates
- ◆ Regional News from the NCPDN, NEPDN and SPDN
- ◆ Upcoming Events



Continued from page 1...

This location is a hot spot for conferences which creates numerous suitable options for meeting sites. Additionally most major airlines provide quite a few daily flights into Orlando. The location, convenience, meeting facilities, agenda and the hopes of cold weather relief for our Northern members, should create an exciting, informative, and fun atmosphere. Please refer to this publication and the NPDN website for updates.

NPDN Newsletter Debuts

April heralds the first month for the NPDN newsletter. The purpose of the newsletter is to provide network members with news on national issues, updates from subcommittees and regional news. Thank you to all that contributed to this month's issue. If you have something that you would like to contribute in the upcoming months, please contact Mary McKellar, NEPDN Education and Training Coordinator, mem40@cornell.edu for more information. Also, any feedback that you would like to provide is greatly appreciated.

replaced with revised confidence levels. New confidence level options will be: Confirmed, Suspected, Not Detected and Inconclusive.

- Diagnosticians will be given an option to pick the lab method for each Diagnosis/ID that they choose to upload to the National Repository. Initially, this field would be an optional field i.e., if diagnosticians choose not to upload the lab method they can do so. However, eventually this field will become a required field in order for diagnosticians to upload Diagnosis ID's to the National Repository.



Did ya know?

Judy Dizon
PDIS Development Team
Kansas State University

If the sample number has a year component and you want it to reflect the current year, then, the Internal Number Prefix must then be changed so that it corresponds to the present year. To do this, a user must have an Institution IT or higher security role.

Please refer to the User Manual found at the login page of <http://www.pdis.org> and see "Editing Labs/Diagnostic Lab Administration" section for a step-by-step procedure on how to perform this task.

Bug Reports

In order to best meet your needs and stay relevant, PDIS has been designed to evolve as user requirements change over time. *Reported bugs and documentation issues will be resolved ASAP.*

Continued on page 3.....

IT Updates

From the PDIS Development Team

Coming Up.....

Nag Nagulapati
PDIS Development Team
Kansas State University

- Confidence levels from the "Diagnosis" interface for Diagnosticians will be eventually

Continued from page 2.....

Managing the ordered evolution of the system is the responsibility of the PDIS Change Management Committee. This committee will meet once a quarter to discuss, approve and reject proposed changes and proposed new features.

How to Submit a Bug Report

Sharmila Dabade
PDIS Development Team
Kansas State University

1. Log in with your username and password
2. Go to change management menu on left side
3. Click on bug report
4. Then click on 'Bug Report' radio button
5. After writing your description you can submit your bug report
6. For more information click on 'Help' link from menu

New PDIS Feature

New Queue Format

The queue format in PDIS has a new look. Previously, each field in the queue was labeled i.e. sample number, host, clinic, diagnosis, etc. In order to decrease the amount of space that each sample physically occupied on the screen, these labels have been removed. With the removal of these field labels, increased number of samples can be viewed by a user at one time.

Contact Us

Regional IT

1. Marietta Ryba-White – GPDN
mrwhite@ksu.edu
785-532-1348
2. Karen Scott – NEPDN
kas8@cornell.edu
607-255-7871
3. Carrie Harmon – SPDN
clharmon@ifas.ufl.edu
352-392-3631x 254
4. Carla Thomas – WPDN
cthomas@ucdavis.edu
530-304-0689
5. Lee Duynslager – NCPDN
duynslag@msu.edu
517-432-5296

IT Developers

1. Will Baldwin -
wbaldwin@ksu.edu
785-532-6270
2. Jayasri Krishnasamy
jayasri@ksu.edu
785-532-1836
3. Nag Nagulapati
vivek@ksu.edu
785-532-1813
4. Judy Dizon
dizon@ksu.edu
785-532-1813
5. Sharmila Dabade
shamadab@ksu.edu
785-532-1836

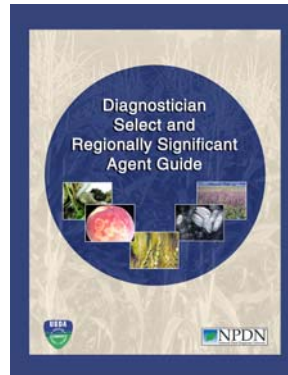


IT Updates

Diagnostic Updates

Distribution of SOP Notebook to NPDN Regions Completed

To date, all NPDN regions should have received at least 25 copies of the NPDN Select and Regionally Significant Agent Guide to be distributed to their diagnosticians. This guide contains all of the currently completed standard operating procedures. If you need more of these notebooks for your region, please contact Mary McKellar, NEPDN Training and Education Coordinator, mem40@cornell.edu.



and Joy Pierzynski (subcommittee Secretary, Kansas State University) and Ned Tisserat (Colorado State University), from the NCPDN, Karen Rane (Purdue University) and Jan Byrne (Michigan State University), from the WPDN, Melodie Putnam (Oregon State University) and Tim Tidwell (CDFA). Additionally, the current APS Diagnostics Subcommittee chairman (Tamla Blunt, Colorado State University), an APHIS representative (Coanne O-Hern) and an Industry representative (Mike Tiffany of AGDIA) also sit on the committee.

Diagnostic Subcommittee Update

Karen Snover-Clift,
Department of Plant Pathology,
Cornell University

The Diagnostics Subcommittee has been very active with many issues being addressed. I want to highlight a few of these issues here. Of course, all meeting minutes are available for your review at the [NPDN website diagnostic subcommittee page](#) (login required).

Being the first issue of the NPDN Newsletter, I think it is appropriate to review our subcommittee membership. The NPDN diagnostic subcommittee members are: from the NEPDN, Karen Snover-Clift (subcommittee Chairman, Cornell University) and Sara May (Penn State University), from the SPDN, Tom Creswell (North Carolina State University) and Carrie Harmon (University of Florida), from the GPDN, Judy O'Mara (Kansas State University)

Recently the committee members have been focusing on coordinating the NPDN PCR Training at the USDA/APHIS/PPQ/CPHST laboratory in Beltsville, MD. We have worked closely with the members of the CPHST laboratory in the past to coordinate training sessions for *Ralstonia solanacearum* R3 B2, *Phakopsora pachyrhizi* and *P. meibomia* (Soybean Rust), Plum Pox Virus and *Phytophthora ramorum*. There will be two training sessions this Spring. The first session will be held April 24-27, 2006 and will cover real-time (also known as qPCR) for *Phytophthora ramorum* and protocols for the identification of the pathogens that cause Citrus Greening. Eight members from all 5 regions will attend this session. The workshop was so popular that Laurene Levy and her staff agreed to conduct a second session to be held May 22-25, 2006. This session will focus on real-time and conventional PCR for *Phytophthora ramorum*.

Continued on page 5.....

Continued from page 4.....

Eight members will also attend this session. Even with two sessions available, we have a long waiting list of members seeking to receive this training.

Many of the members seeking the Beltsville training are also seeking provisional approval to conduct testing for *Phytophthora ramorum* at their laboratories. As you may remember, the provisional approval process was created to help reduce the massive number of samples sent directly to the USDA/APHIS/PPQ/CPHST laboratory in Beltsville. Laboratories that receive provisional approval are or will be able to weed out negatives so the CPHST laboratory can focus on potential positives. Pat Shiel of APHIS is heading up this process and a letter explaining the process and providing a request form for inclusion into the program is available on the [NPDN website diagnostic subcommittee website](#) (login required).

The subcommittee has been working on completing the Standard Operating Procedures (SOP) and Picture Clues (PC). Currently we have 8 SOPs (7 pathogen and 1 insect) and 5 PCs available. The SOPs and PCs currently available on the website were original members of the Bioterrorist Act of 2002 Select Agent List and focus on the diseases/pests known as Brown Stripe Downy Mildew, Citrus Greening, Soybean Rust, Sudden Oak Death/Ramorum Blight, Plum Pox, Southern Wilt/Brown Rot, Potato Wart and Pink Hibiscus Mealybug. Three more SOPs are in progress. They include Philippine Downy Mildew, Bacterial Leaf Streak and Citrus Variegated Necrosis.

Additionally the subcommittee members have been working on forum testing (which is currently on hold), helping with a diagnostician survey put together by Gail Wisler of the SPDN, the policy for uploading Soybean and other Soybean Rust host plant diagnoses, and discussing the PIPE database used for the entry of Soybean Rust sentinel plot data. Please check out the website for additional information and conference call minutes that date back to May of 2004.

New Guidelines for the Examination of Soybean Rust Samples

Karen L. Snover-Clift,
Subcommittee Chair
Department of Plant Pathology,
Cornell University

For the calendar year of 2006, all soybean (*Glycine max*) samples submitted to NPDN laboratories should be examined for the presence of *Phakopsora pachyrhizi*, the causal agent of Soybean Rust. This examination needs to be reported when uploading to the National Repository. This examination can include any of the following techniques: visual/microscope examination, ELISA testing, and/or PCR testing.

Continued on page 6.....

Diagnostic Updates



NPDN diagnostician training at CPHST Laboratory, Beltsville, MD in February 2004. (Left to right: Karen Rane, Purdue University, Laurene Levy, CPHST, Karen Snover-Clift, Cornell University.). Photo Carrie Harmon

Additionally, it is strongly suggested that you examine any possible host of *P.*

pachyrhizi and report your results to the National Repository. The most common hosts besides soybean are yellow sweet clover (*Melilotus officinalis*), vetch (*Vicia dasycarpa*), medic (*Medicago arborea*), lupine (*Lupinus hirsutus*), green and kidney bean (*Phaseolus vulgaris*), lima and butter bean (*Phaseolus lunatus*), and cowpea or blackeyed pea (*Vigna unguiculata*) and Kudzu (*Pueraria montana* var. *lobata*).

Will Lanier from Montana State University, Mark Mayfield from Kansas State University, and Kim Maxson-Stein from South Dakota University, from the NCPDN is Karen Rane from Purdue University, from the WPDN is Carla Thomas from the University of California at Davis and Tim Tidwell from CDFA, and from the National Repository and CERIS is Virginia Russell.



Kudzu (*Pueraria montana*) (Photo James H. Miller, USDA Forest Service, www.ipmimages.org)

During the meeting it was obvious that we needed a smaller group to focus on some key issues. Our first charge was to

review the massive EPA Pest and Host lists. The goal is to reduce the amount of very similar codes and to review the listing for accuracy. To start the process we decided to break up the lists by category. Therefore, we chose to begin with the relatively small list of Abiotic Disorders. As of this date, the group has reviewed the Abiotic list and made some suggestions. The next step is to provide our suggestions to a bigger audience of users for comments and begin tackling the nematode list. Our other charge is to develop a policy for uploading data to the National Repository. Basically this policy will be a “how to” for uploading of information and will contain definitions of the levels of confidence used during this process. We need to include information for all database systems used in the NPDN.

Continued on page 7.....

National Database

National Database Subcommittee Update

Karen L. Snover-Clift,
Subcommittee Chair
Department of Plant
Pathology, Cornell
University

The National Database Subcommittee was created during the recent NPDN IT/Diagnosticians Meeting held near Purdue University in Indiana on January 10-11, 2006. Our membership consists of Karen Snover-Clift from Cornell University and the NEPDN as the Chairman, also from the NEPDN is Nancy Gregory from the University of Delaware, from the SPDN is David Barber from the University of Georgia and Ann Vitoreli from the University of Florida, from the GPDN is

Continued from page 6.....

A draft of this policy as well as the minutes from all of our meetings and conference calls are available on [the NPDN website National Database subcommittee page](#) (login required).



North Central Region: **NCPDN Annual Meeting**

Jan Byrne

Center for Integrated Plant Sciences,
Michigan State University

The North Central region held their annual meeting in Madison, Wisconsin April 19th - 22nd. The meeting was hosted by Brian Hudelson, the director of the Plant Disease Diagnostic Clinic at the University of Wisconsin-Madison (UWM). The meeting was attended by diagnosticians from every state in the region. Participants were impressed by the outreach programs and resources developed by the UWM clinic.



Participants of the 2006 North Central Plant Diagnostic annual meeting held in Madison, WI on April 19-22.

Sessions during the meeting covered a wide range of topics. Amy Gibbs (UWM) presented her work on testing

alfalfa soils for *Aphanomyces euteiches*, Fred Warner (MSU) presented his work on testing soils for *Verticillium dahliae*, and Howard Russell (MSU) updated the group with the newest information on the Emerald Ash Borer. Faculty members at UWM also shared their expertise with the group, including a presentations from Caitilyn Allen on her research efforts with Ralstonia wilt, and Amy Charkowski who is working on low cost screening techniques for several viruses of potato.



Northeast Region:

Mary McKellar

NEPDN Education and Training
Coordinator, Cornell University

NEPDN Member Spotlight

Would you like to know more about the diagnostic laboratories in the NEPDN region? Then the "Member Spotlight" is what you are looking for. Featured each month on the NEPDN website home page, the "Member Spotlight" provides updates on the activities of one of the NEPDN member diagnostic laboratories. Take a moment and check out this month's article on the Insect Diagnostic Laboratory at Cornell University. Also, look for next month's article from the Pennsylvania State University Plant Diagnostic Clinic. Past articles from other NEPDN diagnostic laboratories are also posted on the NEPDN website.

Continued on page 8.....

Regional Updates

Continued from page 7....

Regional Updates

NEPDN Marketing Materials Now Available NPDN Shirts

The NEPDN is proud to offer all of its members the opportunity to purchase either a short sleeve polo or long sleeve woven shirt with the NPDN logo and the designation of "Northeast Region." NEPDN members should have recently received instructions on ordering shirts. If

you did not receive this information and would like to, please contact Mary McKellar, NEPDN Training and Education Coordinator, mem40@cornell.edu.

NEPDN Table Top Display

The NEPDN now has a table top display that is available to its members for outreach activities. Nancy Gregory (University of Delaware) recently used the display at the Eastern Plant Board Meeting in Rehoboth Beach, Delaware on April 3-6, 2006.

Please contact Mary McKellar, NEPDN Training and Education Coordinator, mem40@cornell.edu, for more information about borrowing this display. As requested at the NEPDN regional meeting, the design and production of an NEPDN poster is currently under progress. Please stay tuned for more information on the availability of this poster.



Gladiolus rust (*Uromyces transversalis*) on *Gladiolus* spp. (Photo Anne-Sophie Roy, European and Mediterranean Plant Protection Organization www.invasive.org)



Southern Region

Carrie Lapaire Harmon
Department of Plant Pathology
University of Florida/IFAS

Gladiolus Rust (*Uromyces transversalis*) Confirmed on Domestic Gladiolas in FL

Find more information on the outbreak and regulatory measures [here](#) (NAPPO Phytosanitary Alert System). Pictures and diagnostic information

can be found at the [Systematic Botany and Mycology website](#).

Black Sigatoka (*Mycosphaerella fijiensis*) of Banana Confirmed in Puerto Rico

Find more information in the [May 2006 APS, Plant Disease Notes](#).

April Soybean Rust Finds Across the Southeast

Dry weather across much of the south and drought in Florida has resulted in few new finds. More information can be found at http://spdn.ifas.ufl.edu/soybean_rust.htm and <http://www.sbrusa.net/>.

SPDN Budget Proposals

The SPDN budget proposal cycle is underway for the 2006-2007 year. A huge thank-you to all of those who have moved their documents through the system! If you have questions about this process, please contact Carrie Harmon at clharmon@ufl.edu.

National Events

May 21-26, 2006: [Second International Workshop for the Morphological and Molecular Identification of the Straminipiles: *Phytophthora* and *Pythium*](#), NCSU, Raleigh, NC

July 29-August 2, 2006: [American Phytopathological Society Annual Meeting](#), Quebec City, Canada

September 25-29, 2006: [15th Ornamental Workshop on Diseases and Insects](#), Crossnore/Kanuga, Hendersonville, NC

October 2006: It-Diagnosticians Meeting, Kansas City, MO. More information to follow!

November 29 – December 1: [National Soybean Rust Symposium](#), St. Louis, Missouri

December 10-13, 2006: [Entomological Society of America Annual Meeting](#), Indianapolis, IN

Tentative date: January 2007, NPND National Meeting, Orlando, FL. More information to follow!

Regional Events

May 8-10, 2006: [Virus Inclusion Workshop](#), Gainesville, FL

May 22-25, 2006: [Coleoptora Workshop](#), Blackburg, VA

Upcoming Events

