

National Updates

NPDN National Meeting Registration Deadline Approaching Quickly!

Annual Meeting Planning Team
Karen L. Snover-Clift
Department of Plant Pathology
Cornell University

Registration continues for the first ever NPDN National Meeting to be held **January 28-31, 2007** at the Wyndham Orlando Resort in Orlando, Florida.

The deadline for early registration is December 18, 2006.

The early registration fee is \$350.00. This includes 3 lunches and a banquet. Full registration fees are \$425.00 and

start December 19, 2006. The deadline for the full registration is January 8, 2007. The poster abstract submission period is now closed.

The tentative program, registration and hotel information is available on the [Plant Management Network's NPDN National Meeting Web Page](#).

Continued on page 2...

Issue Highlights:

- ◆ 2007 National Meeting Announcement
- ◆ Diagnostic Subcommittee Update
- ◆ NPDN Education and Training Subcommittee Update
- ◆ Call for First Detector Success Stories
- ◆ Education and Training Web Site Update
- ◆ 2005-2006 Education and Training Map Update
- ◆ Updates from the PDIS Development Team
- ◆ NPDN National Database subcommittee Update
- ◆ Update in the Western Region



[Wyndham Resort](#), Orlando, FL

Continued from page 1...

If you do not currently have a Plant Management Network (PMN) password, you will need to create one to register.



To register for the PMN web site:

1. Go to the Registration Tab.
2. Click on 'Register On-line.'
3. On the Plant Management Network Page, go to the NPDN

Members area and sign in.

4. Fill in the appropriate fields and submit the registration form.

Please plan to register early as we believe this will be a popular event!

the diagnostic subcommittee from each region.

- The upcoming National Meeting and our submission of an abstract for the subcommittee poster and the submission of our break out session agenda.
- The need for a subcommittee review document.
- Uploads to the National Repository of Viruses and Abiotics.

The next meeting will be held on December 14, 2006.

Education and Training

Diagnostic Updates

Diagnostic Subcommittee Update

Karen L. Snover-Clift
Diagnostic Subcommittee Chairperson
Department of Plant Pathology
Cornell University

The Diagnostic Subcommittee held a conference call on November 9, 2006. During this meeting a number of issues were addressed. Please refer to the [NPDN web site Diagnostic Subcommittee page](#) (login required), for complete minutes of this meeting.

Topics of discussion included:

- The Entomology representatives to serve on

NPDN Training and Education Subcommittee Update

Amanda Hodges
Training and Education Subcommittee Chairperson
Department of Entomology and Nematology
University of Florida

The NPDN Training & Education Subcommittee will meet via conference call on Monday, November 27, 2006. Agenda items for the conference call include training in the International Plant Diagnostic Network, the Training and Education review document contributions, training map updates, the new NPDN Training and Education website <http://cbc.at.ufl.edu/>, new module development, the First Detector Information Page, distance education options, testing, and updates for the Crop Biosecurity Project.

Continued on page 3...

Continued from page 2...

Full meeting minutes will be posted on the NPDN Training and Education Subcommittee page <http://www.npdn.org/> (password required).

First Detector Success Stories

The Training and Education Subcommittee is soliciting First Detector success stories for the NPDN review document. An example of a success story from Florida includes the following:

Anthony Camerino, Horticulture Agent and Master Gardener Coordinator for the University of Florida, Citrus County Cooperative Extension attended a 'High Risk Pest First Detector Training' during May 2006. In August 2006, a few homeowners talked to Master Gardener volunteers about an insect that didn't exactly look like the common leaf-footed bug. The Master Gardener volunteers brought the specimen to Anthony, and he immediately suspected that the leaf-footed bug was the recently detected *Leptoglossus phyllopus*. Specimen identification was confirmed by Lyle Buss, UF/IFAS Insect Identification Lab. This was the first find of *L. phyllopus* in Citrus County, Florida.

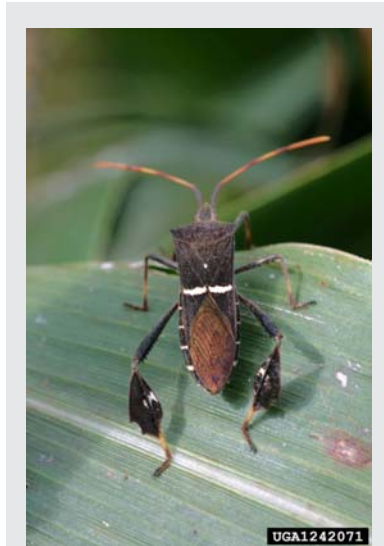
Please send success stories to your Regional Training and Education Coordinator or to Amanda Hodges achodges@ufl.edu.

Training Website Update

Most of the technical glitches with the recently developed NPDN

training site <http://cbc.at.ufl.edu/> seem to be corrected, but continue to report all problems to Amanda Hodges achodges@ufl.edu.

Once you report a problem, Amanda will enter it in the error report log. You may view a listing of errors reported to date on the NPDN training site. Each error is assigned a number. Errors with the database are always assigned a high priority. As soon as your problem has been addressed, you will receive an e-mail from Amanda.



Leaf-footed bug (*Leptoglossus phyllopus*). (Photo Russ Ottens, University of Georgia, www.forestryimages.org)

Training Map Updates

In order for the accomplishments of the NPDN Training and Education Program to be properly represented, it is important that we have as much data entered into our NPDN Training Database as possible.

Maps of Training and Education accomplishments, including number of sessions conducted in each state and First Detectors by county are generated for annual reporting purposes. We are in the process of reviewing our August 2005-July 2006 maps.

Continued on page 4...

Education and Training

Education and Training

Continued from page 3...

All Regional Training and Education Coordinators are in the process of sending out this information to their member states.

You may also view the DRAFT August 2005-July 2006 map on the Training and Education Subcommittee webpage (password required) <http://www.npdn.org/> under the heading 'Other Documents Under Review'. You may also view the August 2003-July 2005 maps at this location.

If you have additional data that has not been entered into the NPDN Database <http://cbc.at.ufl.edu/>, please enter your data by **December 1, 2006**. You will also need to notify your regional training and education coordinator or

Amanda Hodges ahodges@ufl.edu of the missing data and provide date and location information. This will allow us to properly search for your data and add it to the map.

If you have previously submitted data and you believe any of these maps are incorrect, please contact your regional coordinator or Amanda Hodges with details concerning the date and location of data that you believe is missing.

All details concerning map errors must be received on or prior to **December 1**,

2006 for inclusion in the NPDN Training and Education Subcommittee review material.

NEW! Training Modules Available

The posting of new training modules for the NPDN program has moved to the [NPDN First Detector Information Page](#).

In addition to several new special topic modules that are under review, all core NPDN modules will be posted on this page for any extension educator to use for educational use only.

Review and posting of all core modules on the web is scheduled to be complete during December 2006.

Modules that are under review are posted on the [NPDN Training and Education Subcommittee page](#) (password required).

Outline

- Introduction
- Life Cycle
- Damage
- Past Introductions
- Potential Introductions
- Management/Control

NPDN
National Plant Diagnostic Network

Photos: Doug Stone, Mississippi State
<http://www.insectimages.org>

New Special Topic Module: Scolytids of the Eastern U.S.

New Special Topic Module Available in November 2006:

Scolytids of the Eastern U.S.-by
Amanda Ellis and Amanda Hodges

Remember that anyone is welcome to submit training modules to the NPDN Training and Education Program. Contact module editors Amanda Hodges ahodges@ufl.edu or Mary McKellar mem40@cornell.edu for more information.

From the PDIS Development Team

IT Updates

Accomplished Requests

- Diagnosticians can add up to 24 Diagnosis/ID's to a sample.
- GIS Mapping - Besides mapping a combination of Host/Habitat and/or Diagnosis/ID, Diagnosticians can now map a combination of Host/Habitat with multiple Diagnosis/ID's.
- When uploading sample data to the National Repository, Diagnosticians can now also choose from 3 new lab methods under *Diagnosis* tab for their diagnoses: Molecular Analysis, Nematode Extraction, and Soil Analysis.
- When you enter the Host/Habitat's information under the *general* tab, it will now be imported into the *Host/Habitat* drop down list under the *diagnosis* tab. This change has been made in an effort to reduce the number of keystrokes it takes to enter a sample.
- Diagnosticians now have the ability to edit EPA codes for printed reports from the Billing tab ("Diagnosis/ID For National Repository" panel). Using this feature, Diagnosticians can control what information is printed for clients and submitters.

New PDIS Feature!

Nagarjuna Nagulapati
PDIS Development
Team
Kansas State University

"Condensed Report" feature is now available for Sample Sets.

Using this feature, Diagnosticians can view/print a condensed report for diagnostic reports and invoices of all or the selected samples in a Sample Set.

Diagnosticians can also e-mail condensed diagnostic reports and invoices to their clients and submitters. Apart from the condensed report feature, diagnosticians can still view/print reports in a standard way.

Prior to this new feature, diagnosticians were only given the option of printing a separate report for each and every sample in a Sample Set.

For example, if there were 50 samples in a Sample Set, a standard report feature would generate a separate report for those 50 samples which can be as short as 50 pages; but using the condensed report feature diagnosticians can view/print a single condensed report for all the 50 samples which can only be as long as 3 pages.

This new feature was made available in an effort to reduce the redundancy and resources needed to print reports in a standard way.

Did ya know?

Judy Dizon
PDIS Development Team
Kansas State University



- The PDIS Software is updated with bug fixes/changes everyday at 8:00 AM CST. The system may not be stable during the PDIS software update. Use of the system during an update may result in the loss of data and/or unexpected errors. To safeguard your data, save your work and logout. You may safely resume your work at 8:15 AM CST.
- Diagnosticians can receive email notifications for every sample submitted to their lab. To do this, a user must have an Institution IT or higher security role. (Please refer to the User Manual found at the login page of <http://www.pdis.org> and see “Editing Labs” section found under the “Labs” section of the “Administration Module” for more information.)

How to Disable Download Security While Using PDIS

Sharmila Dabade
PDIS Development Team
Kansas State University



The enhanced download security included in Microsoft WindowsXP Service Pack 2 can prevent you from downloading files generated in PDIS such as graphics and PDFs. Follow these steps to allow downloads while using PDIS.

Following instructions apply for both IE 6.0 and IE 7.0

1. Open web browser
2. Click on Tools menu and choose *Internet Options*
3. Click on *Security* tab
4. Click on the *Custom Level* button
5. Scroll down to *Downloads*
6. Enable option for *Automatic prompting for file downloads*
7. Click OK and re-open the browser for changes to take effect

For more information, please click on the ‘Help’ link under the Main Menu on www.pdis.org.

National Database

National Database Subcommittee Update

Karen L. Snover-Clift
Department of Plant Pathology
Cornell University

The National Database Subcommittee met on November 8, 2006 to continue our work on reviewing the massive EPA Pest and Host lists and creating guidelines for uploading documents that will clarify how sample diagnoses should be transmitted to the National Repository at Purdue University. During this meeting a number of issues were addressed. Please refer to [the NPDN web site National Database subcommittee page](#) (login required), for complete minutes of this meeting.

During this call several topics were discussed including:

- The need of a secretary of this subcommittee. This will be decided at the next meeting.
- The upcoming National Meeting and the submission of the NDBSC poster abstract and the submission of our break out session agenda.
- The Guidelines progress since Kansas City meeting.
- Review of and changes made to the HOST list - E & F.

The next meeting will be held on December 13, 2006.



Regional Updates

Western Region

First report of *Cucurbit yellow stunting disorder virus* in Arizona and Possibly California

Cucurbit yellow stunting disorder virus (CYSDV) was detected for the first time in Arizona melon fields.

Melons in Imperial Valley, California are also suspected of having the virus, however DNA testing is still underway.

This whitefly transmitted virus causes yellowing of the older leaves and is closely related to *Lettuce infectious yellows virus*.

For more information about this finding, please visit on the web: [NAPPO Pest Alert *Cucurbit yellow stunting disorder virus*](#)

Upcoming Events

National Events

December 3-6, 2006 and December 7-8, 2006: [4th International Bemisia Workshop and International Whitefly Genomics Workshop](#), Hawk's Cay Resort, Duck Key, Florida

December 10-13, 2006: [Entomological Society of America Annual Meeting](#), Indianapolis, IN

January 28-31, 2007, [NPDN National Meeting](#), Orlando, FL.

