

## National Updates

### Annual Meeting Update

Annual Meeting Planning Team  
Karen L. Snover-Clift  
Department of Plant Pathology  
Cornell University

### **NPDN National Meeting REGISTRATION AND ABSTRACT SUBMISSION NOW AVAILABLE!**

Registration and abstract submission for the first NPDN National Meeting to be held **January 28-31, 2007** at the Wyndham Orlando Resort in Orlando, Florida is now available. The registration and abstract submission process will **only** be available electronically.



[Wyndham Resort](#), Orlando, FL

There will be no hard copy mailings so please share this information with colleagues you think may be interested.

The tentative program, abstract submission instructions, registration and hotel information is available on the [Meeting Information page](#) of the NPDN web site.

*Continued on page 2.....*

#### **Issue Highlights:**

- ◆ 2007 National Meeting Registration Now Available
- ◆ Update on Soybean Rust in the U.S.
- ◆ Updates from the Diagnostic, Education and Training and National Database Subcommittees
- ◆ Call for First Detector Success Stories
- ◆ Update on National Training Program in Crop Biosecurity for First Detectors
- ◆ Review of the NPDN Phase 2 Meeting
- ◆ Updates on the National Database Web Site
- ◆ Pink Hibiscus Mealybug Confirmed in Louisiana

# National Updates

*Continued from page 1....*

If you do not currently have a Plant Management Network (PMN) password, you will need to create one to register for this meeting and/or submit an abstract.

## To register:

1. Go to the Registration Tab.
2. Click on Register On-line.
3. On the Plant Management Network Page, go to the NPDN Members area and sign in.
4. Fill in the appropriate fields and submit the registration form.

## To submit an abstract:

1. Go to the Abstract Submission Tab.
2. Click on Log In.
3. Fill the appropriate fields and submit the abstract.

**Please plan to register early as we believe this will be a popular event!**

Please visit [www.sbrusa.net](http://www.sbrusa.net) for the most recent reports of this disease.

On another important note, the State and Federal responsibilities for the identification of soybean rust have been changed. The changes are as follows:

-The first find of soybean rust in a state will be confirmed by PPQ.

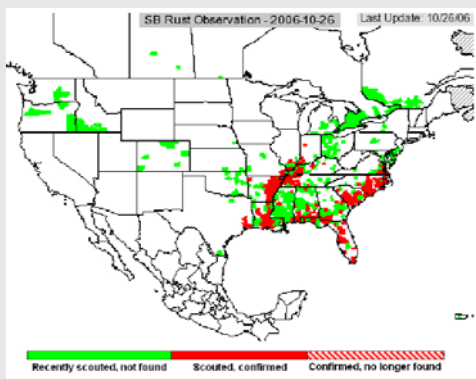
-The first find of soybean rust on a new host in the United States will be confirmed by PPQ.

-Subsequent finds of soybean rust in a State in which PPQ already confirmed its presence would be identified by the laboratory approved by the State- either the state or NPDN lab.

## Diagnostic Updates

### Update on Soybean Rust in the U.S.

Many new findings of soybean rust have occurred in the southeastern U.S. especially along the Mississippi river valley throughout the month of October. To date, soybean rust has now been confirmed in 205 counties in 15 states. This is the first time that soybean rust has been confirmed in Arkansas, Illinois, Indiana and Virginia since its arrival in the U.S. in 2004.



Recent soybean rust findings in the U.S. in October. ([www.sbrusa.net](http://www.sbrusa.net))

### Diagnostics Subcommittee Update

Karen L. Snover-Clift  
Diagnostic Subcommittee Chairperson  
Department of Plant Pathology  
Cornell University

The Diagnostics Subcommittee held a conference call on October 12, 2006. During this meeting a number of issues were address.

Please visit the [NPDN web site diagnostic subcommittee page](http://www.sbrusa.net) (login required).

*Continued on page 3....*

Continued from page 2....

Topics of discussion included:

- Report on Protocols for Identification of Bemisia Q biotype.
- Discussion of the National Meeting,
  - a. Planning and assignment of poster presentation.
  - b. Discussion of presentations for the Diagnostics break out session.
    - i. The evolution of lab upgrades and preparedness since the NPDN (Karen Snover-Clift).
    - ii. Review on new Agdia tests (Mike Tiffany).
    - iii. Valuable Laboratory Techniques (Gail Ruhl, Karen Rane, and Tom Creswell).
- Provisional Lab Approval. See web site for most recent updates.
- Addition of Entomologists to the group.
- Discussion of the upcoming IT/Diagnosticians meeting in Kansas City.
- Discussion of the Kanuga-Ornamentals Workshop.
- Report on uploading status of laboratories to the National Database.
- Update on Molecular Diagnostic Lab at the Beltsville facility—Mary Palm.
- Policy change on the identification and confirmation of Soybean Rust.

The next meeting will be held on November 9, 2006.

## New Entomology Identification Tools Available

### *Invasive Mite Identification: Tools for Quarantine and Plant Protection*

**A new Lucid<sup>®</sup> interactive identification resource by Acarologist Dr. David E. Walter**

The Center for Plant Health Science and Technology (CPHST) Identification Technology Program Team is pleased to announce the release of its newest identification resource *Invasive Mite Identification: Tools for Quarantine and Plant Protection*.

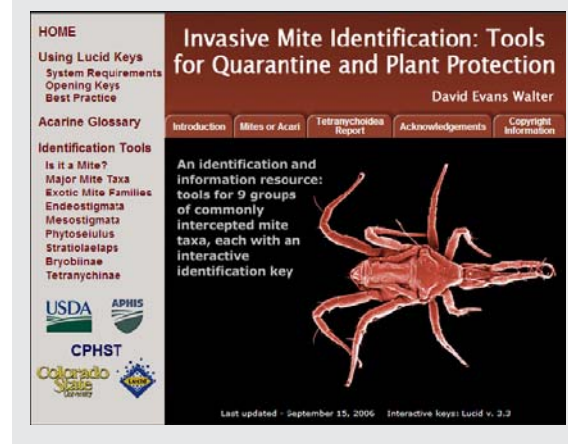
This resource was created through federal-state collaboration between USDA/APHIS/PPQ/CPHST and Colorado State University, and through additional cooperation with the California Department of Food and Agriculture and The University of Alberta-Edmonton.

*Invasive Mite Identification* is an information resource containing an extensive Acarine Glossary and nine different tools covering commonly intercepted mite taxa, each with an interactive identification key.

This new tool can be access on the web at: <http://www.lucidcentral.org/keys/v3/mites/>

Continued on page 4...

# Diagnostic Updates



# Diagnostic Updates

*Continued from page 3..*

## *White Fly Pupa of the World*

This compendium and key to the Genera of the Aleurodicinae & the Aleyrodinae was developed by John Dooley, USDA-APHIS-PPQ. It includes:

- ◆ Key to all the known genera of the Aleurodicinae (including the species of Aleuronudus, Aleurodicus, Dialeurodicus, Metaleurodicus, and Paraleyrodes genera) with associated data sheets for host, distribution, biology, taxonomy, natural enemies, related genera, and nomenclature.
- ◆ Key to 31 genera of the Aleyrodinae with associated data sheets for host, distribution, biology, taxonomy, natural enemies, related genera, and nomenclature.
- ◆ Data list of the known species of these genera including synonyms.
- ◆ Data list of all the biological hosts with the associated pest in excel and HTML formats.

*White Fly Pupa of the World* can be accessed on the web at: <http://www.lucidcentral.org/keys/v3/whitefly/NIDUCTION%20I%20THE%20ALEYRODDAEM>

# Education and Training

## Training and Education Subcommittee Update

Amanda Hodges

Training and Education Subcommittee Chairperson

Department of Entomology and Nematology

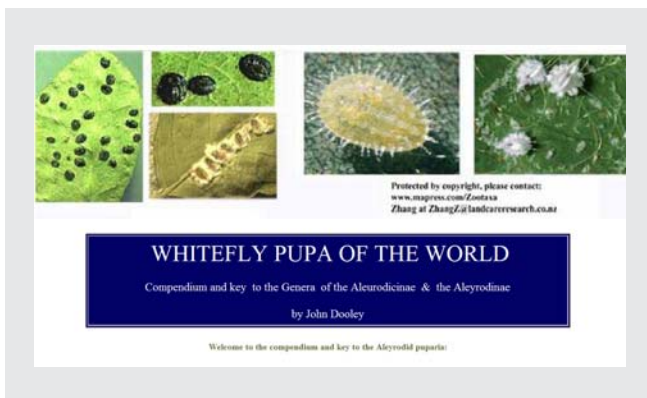
University of Florida

The regional Training and Education Coordinators met via conference call on Tuesday, October 17, 2006. The NPDN Training & Education

Subcommittee met via conference call on Thursday, October 19, 2006.

Both conference calls discussed several issues including the new NPDN Training and Education web site <http://cbc.at.ufl.edu/>, new module development, distance education options, testing, and updates for the Crop Biosecurity Project.

Full meetings minutes for both conference calls are available on the NPDN Training and Education Subcommittee page <http://www.npdn.org/>





## Request for First Detector Success Stories

The Training and Education Subcommittee is soliciting First Detector success stories for the NPDN review document. An example of a success story from Florida includes the following:

“Anthony Camerino, Horticulture Agent and Master Gardener Coordinator for the University of Florida, Citrus County Cooperative Extension attended a ‘High Risk Pest First Detector Training’ during May 2006. In August 2006, a few homeowners talked to Master Gardener volunteers about an insect that didn’t exactly look like the common leaf-footed bug. The Master Gardener volunteers brought the specimen to Anthony, and he immediately suspected that the leaf-footed bug was the recently detected *Leptoglossus zonatus*. Specimen identification was confirmed by Lyle Buss, UF/IFAS Insect Identification Lab. This was the first find of *L.zonatus* in Citrus County, Florida.”

Please send success stories to your Regional Training and Education Coordinator or to Amanda Hodges [achodges@ufl.edu](mailto:achodges@ufl.edu).

## Training Web Site Update

We have been experiencing some technical difficulties with the recently developed NPDN training site <http://cbc.at.ufl.edu/>, but the majority of the database technical glitches seem to be corrected.



Photo Gary Bergstrom, Cornell University

Some aesthetic changes are still under development with the site, but the majority of these should be in place by early to mid-November. Please continue to send any database error reports to Amanda Hodges [achodges@ufl.edu](mailto:achodges@ufl.edu).

On October 2, 2006, we also included an Error Report Log section on the web site so that you can view past problems that were reported and corrected.

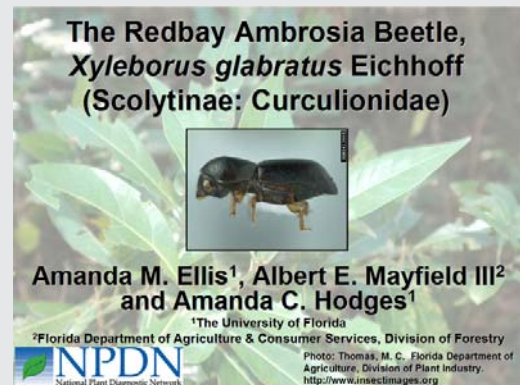
If possible, please try to have your training data (at least up to July 2006) updated in the database by November 15, 2006. If you have any questions or problems meeting this deadline, please contact Amanda Hodges [achodges@ufl.edu](mailto:achodges@ufl.edu).

## New Training Modules Available

Two new special topic training modules have been reviewed and will be posted on the NPDN training site <http://cbc.at.ufl.edu/> during the week of October 23, 2006.

*Continued on page 6...*

# Education and Training



# Education and Training

*Continued from page 5....*

•Redbay Ambrosia Beetle, *Xyleborus glabratus*-by Amanda Ellis, Albert

Mayfield III, and Amanda Hodges

•Africanized Honeybees, *Apis mellifera scutellata*-by Amanda Ellis, James Ellis, and Amanda Hodges

Several other special topic training modules are currently under review and will be available soon.

## Update on National Training Program in Crop Biosecurity for First Detectors

Gerald Holmes  
North Carolina State University,  
Howard Beck  
University of Florida,  
Gerry Snyder  
Kansas State University

This article gives a brief update on the current status of the three-year National Research Initiative (NRI) grant, funded through Cooperative State Research, Education, and Extension Service (CSREES).

There are two main areas of emphasis for the project at this time. One is the curriculum development of the six core training modules, and the other is the technology that will manage and display the training in a web browser.

The six training modules are in various stages of progress. Gerry Snyder at Kansas State University, along with a team of writers and graphic specialists, is converting the instructor-led materials

into online training. He is using the existing PowerPoint files as well as input from a variety of First Detector trainers and other subject matter experts.

• Module 1 (Mission of the NPDN) – This module has been through a first-level alpha review by both NPDN and target audience representatives. It is currently being modified to incorporate the feedback given.

- Module 2 (Monitoring for High Risk Pests) – This module is currently going through a first-level alpha review by both NPDN and target audience representatives.
- Module 3 (Quality and Secure Sample Submission) – This module is in the process of being designed, with the guidance of Tom Creswell, and is being put into a storyboard format. It will be going through a first-level alpha review within a few weeks.



*Continued on page 7....*

*Continued from page 6....*

- Module 4 (The Art and Science of Diagnosis) - This module is in the process of being designed, with the guidance of Amanda Hodges, and is being put into a storyboard format. It will be going through a first-level alpha review within a few weeks.
- Module 5 (NPDN Exercise Scenarios) – This module has been analyzed and is in the process of being designed, with the guidance of Carla Thomas, and is being converted to online simulated scenarios.
- Module 6 (Effective Photos for Digital Sample Submission) – This module has been researched and is waiting to be storyboarded and sent for a first-level alpha review.

The technology that will manage and display the training in a web browser has reached a significant level of development. The content management system, Lyra, is a program developed by Howard Beck at University of Florida. The training content is entered in Lyra and is then displayed in a web browser via a Macromedia Flash program that was also developed by Howard Beck. These two technologies work together to create the online training. At this time, he is working to make the online display of the training look as much like the storyboards as possible.

There will be a presentation of the online training and its supporting technology at the NPDN National Meeting in Orlando in January 2007.

If you have any questions about the National Training Program in Crop Biosecurity for First Detectors, please contact Gerald Holmes at [gerald\\_holmes@ncsu.edu](mailto:gerald_holmes@ncsu.edu), Howard Beck at [hwb@ufl.edu](mailto:hwb@ufl.edu), or Gerry Snyder at [gsnyder@ksu.edu](mailto:gsnyder@ksu.edu).

## **National Database Subcommittee Update**

Karen L. Snover-Clift  
National Database Subcommittee Chairperson  
Department of Plant Pathology  
Cornell University

The National Database Subcommittee met on October 11, 2006 to continue our work on reviewing the massive EPA Pest and Host lists and creating guidelines for uploading documents that will clarify how sample diagnoses should be transmitted to the National Repository at Purdue University. During this meeting a number of issues were addressed. Please refer to the National Database subcommittee page of the [NPDN web site](#) (login required), for complete minutes of this meeting.

Topics of discussion included:

- The Agenda for the NPDN National Meeting, National Database Subcommittee Breakout Session.
- The Guidelines progress.
- The format of the Host Common Name Field.
- A review of the EPA HOST CODE listing beginning with Genera listed alphabetically under C and D.

The next meeting will be held on November 8, 2006.

# **National Database**

## Review and Outcomes of the NPDN PHASE 2 MEETING

Eileen Luke  
Director, NAPIS  
Purdue University

A joint meeting with diagnosticians, epidemiologists, and information technologists was held in Excelsior Springs, MO on October 16-17, 2006 on Phase 2 of the NPDN National Database.

The purpose of this recent meeting was:

1. To fix problems with Phase 1.
2. To clarify fields and not use fields for multiple purposes.
3. To enhance epidemiology work.
4. To improve data consistency.

Phase 2 of the NPDN project is focused on enhancing epidemiology in order to better detect outbreaks. Discussions on the current data being collected and issues concerning definition of terms, etc. were discussed. This included such items as:

- the addition of three new lab methods
- definitions of the four confidence levels
- a review of what data should be uploaded into the NPDN national database
- availability of national reports to the diagnosticians
- handling of plant identification samples
- code issues of Ramorum Blight and SOD
- moving towards eliminating the need of double entry with PIPE samples
- information needed by the epidemiologists

-information needed by the diagnosticians.

For more information, please refer to the meeting minutes that are posted on the National Database subcommittee page of the [NPDN web site](#) (login required).

Due to the complexity of Phase 2, a small group was formed consisting of a diagnostician from each region and two epidemiologists to address Phase 2. A draft document was started describing what data is currently collected, what data is needed for epidemiology, and what information is needed by the diagnosticians to aid in their reporting requirements. This document will then be used in a conference call on November 9th with a larger audience of diagnosticians, epidemiologists, and information technologists. Following the conference call of November 9th, the information will be vetted out to the whole network for input.

## NPDN National Database Web Site Updates

### Soybean Rust Maps

Shen Wang  
CERIS Programmer Analyst  
Purdue University

Users can access soybean rust maps (Fig. 1) by visiting <http://npdn.ceris.purdue.edu/htbin/sbrmapd.com> (login required).

There are four options to narrow the search results and map display: Dates, Regions, Data Source and Year Limit. Users can select any combination or use the default options to generate a map.

*Continued on page 9....*



# National Database

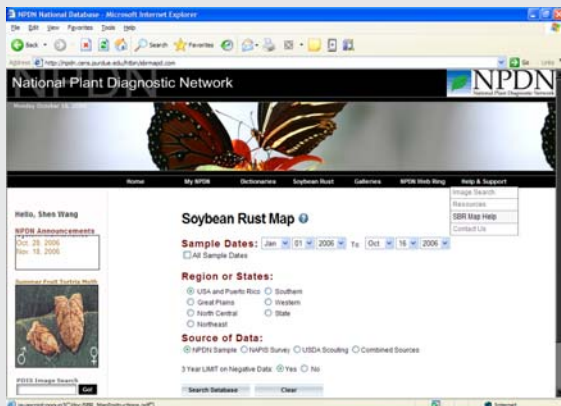


Figure 1. Soybean Rust Map Interface

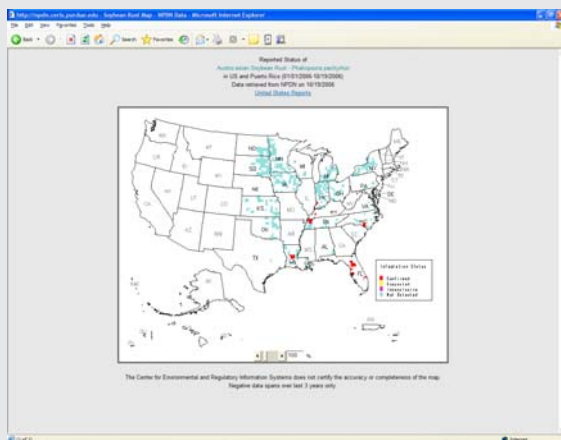


Figure 2. U.S. Soybean Rust Map

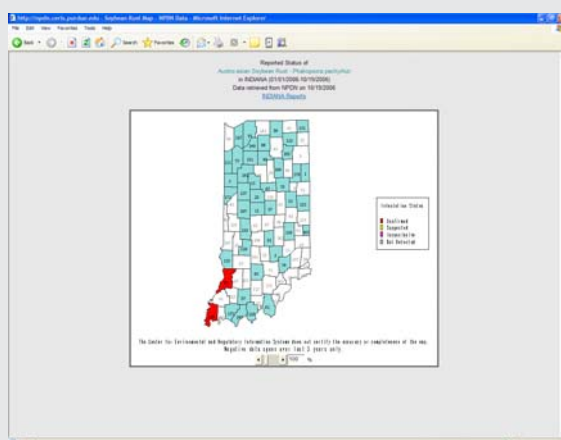


Figure 3. State Soybean Rust Map

Maps will be generated in a popup window (Fig 2) with legend, title and footnote. Each county with data will be assigned a color showing the pest distribution. Maps enable the users to zoom in/out, pan in the zoomed scope, and link to an additional map or report. A zoom bar and window are displayed at the bottom of the map window. Once zoomed in, the user can pan over the map to see detailed distribution over the states.

When viewing a United States map or a regional map, moving the mouse over the state abbreviations on the map will trigger the map tips to popup. If there is data in that state then a left-click on the state label displays a state map with county boundaries and codes. For state maps, moving the mouse over the county code will show the county name (Fig 3). Users can view reports by clicking the report link listed in the title. To obtain the county report, users can click on the county code in a state map.

For detailed instruction on using soybean rust maps click on soybean rust map help under the Help & Support drop down menu or click on the question mark next to the title.

## User Accounts

Mike Hill  
CERIS Programmer Analyst  
Purdue University

Access to the NPDN National Database is available to diagnosticians for searching their diagnostic lab records. Diagnosticians may request a user ID and password by sending an e-mail to [npdn@ceris.purdue.edu](mailto:npdn@ceris.purdue.edu) with their name, telephone number, organization, and diagnostic lab contact.

The URL for logging into the NPDN National Database is located at <http://npdn.ceris.purdue.edu>.

For more information or assistance please contact Mike Hill at (765)494-9854 or by e-mail at [mikehill@purdue.edu](mailto:mikehill@purdue.edu).

For more information about this finding, please visit on the web:

[The Louisiana Department of Agriculture and Forestry Press Release: Pink Hibiscus Mealybugs Discovered in Jefferson Parish](#)



Pink hibiscus mealybug, *Maconellicoccus hirsutus* (Photo FDACS-DPI)

## Regional Updates



### *Southern Region:* **Pink Hibiscus Mealybug Discovered in Louisiana**

Pink hibiscus mealybug has been recently confirmed from samples collected in southeastern Louisiana.

This discovery is significant in that it is the first time that pink hibiscus mealybug has been confirmed in residential private locations in this state.

## *National Events*

**2006**

**November 29-December 1, 2006:** [National Soybean Rust Symposium](#), St. Louis, Missouri

**December 3-6, 2006 and December 7-8, 2006:** [4th International Bemisia Workshop and International Whitefly Genomics Workshop](#), Hawk's Cay Resort, Duck Key, Florida

**December 10-13, 2006:** [Entomological Society of America Annual Meeting](#), Indianapolis, IN

**2007**

**January 28-31, 2007,** [NPDN National Meeting](#), Orlando, FL.

**May 7-9, 2007,** SPDN Invasive Arthropod Workshop , Clemson, SC  
More information to follow!

## *Regional Events*

**November 7-9, 2006,** [APS Northeastern Division Meeting](#), Burlington, VT

# Upcoming Events



Mary McKellar, Editor  
NEPDN  
Cornell University