

# NPDN News

Volume 8 Issue 9, September 2013

## ARE YOU AWARE? PLANT HEALTH PROGRESS – DIAGNOSTIC GUIDES

Martin Draper, National Program Leader - Plant Pathology, USDA-NIFA

The Editorial Board of the Plant Management Network met at APS in Austin, TX and discussed the relatively small number of submissions of Diagnostic Guides to the online practitioner's journal, *Plant Health Progress* (PHP). The editors were concerned that the reason could

length. As text only, that's about four pages. With figures and citations the following example is about eight pages total ([www.plantmanagementnetwork.org/pub/php/diagnosticguide/2011/pea/](http://www.plantmanagementnetwork.org/pub/php/diagnosticguide/2011/pea/)). The editorial board encourages the use of figures and images to enhance the textual content of the article. Is there something unique about how you do a step in the diagnostic method that can best be shown through action? Does your pathogen have a motile spore stage? This publication format even accepts short video clips!

These reports could serve as a compilation of new lab methods for fellow NPDN labs. Potential authors should be aware that this is not a replacement for a First report in *Plant Disease*. The format for a PHP Diagnostic Guide is more complete and applies to everywhere the disease

be that the most likely audience of potential authors might not be aware of it. When the publication type was first conceived, the notion was that it would be a valuable outlet for diagnosticians to both share methods and to find methods for new diseases emerging in their states and regions.

Diagnostic Guides are content heavy and very practical with a guideline of 3000 words in

### *Plant Health Progress* Peer-Reviewed Journal of Applied Plant Health



### NPDN Executive Director Receives International Recognition

NPDN Executive Director, and SPDN Director, Professor Jeff Jones was awarded the Jakob Eriksson Prize by the International Society of Plant Pathology. The Prize was presented to Jeff at a formal ceremony during the International Congress of Plant Pathology in Beijing (August 2013). The Royal Swedish Academy of Sciences administers the Jakob Eriksson Prize Fund and presented to Jeff a gold medal award ([www.isppweb.org/about\\_eriksson.asp](http://www.isppweb.org/about_eriksson.asp)).

The prize is awarded in recognition of "...research of a distinct international value and merit". Jeff is the 11<sup>th</sup> recipient of the prize joining a very distinguished group of plant pathologists.

CONGRATULATIONS Jeff!

## Issue Highlights

- Tip: Online resources for determining "First Report Status"
- Using the STAR-D implementation booklet—Step 1
- Weed Seedling Identification Guide
- New digital identification tool released
- National Repository: Incorporating scientific names for fungi
- Plus lots more including ALB confirmed in NY again!



occurs. Collaborative works are encouraged. A first report format is different. Think of a diagnostic guide as a “how to”. PHP can accommodate first reports in the ‘Brief’ format, but that publication format serves a different function.

Time is hard to come by, especially in the busy season and page charges do apply, but this is an opportunity to elevate your position and professionalism with a publication type that is designed especially for your application of the science.

This could be a good resource for diagnosticians to publish new methods on emerging diseases. Sections of the publication are introduction, host(s), disease, pathogen(s), taxonomy, symptoms and signs, host range, geographic distribution, pathogen isolation, pathogen identification, pathogen storage, pathogenicity tests and literature cited. The full publication guidelines for PHP Diagnostic Guides can be found at [www.plantmanagementnetwork.org/guidelines/types/#Diag](http://www.plantmanagementnetwork.org/guidelines/types/#Diag). All publication types in Plant Health Progress are peer reviewed. Share what you have learned about working with a new pathogen, a pathogen new to you, or a well-established pathogen with new methods. You could help get all of your colleagues up to speed!

Publication guidelines for PHP Diagnostic Guides are as follows:

### Plant Health Progress - Diagnostic Guides

*Plant Health Progress* publishes peer-reviewed Diagnostic Guides. They describe the methods used to identify nutrient and other abiotic disorders, diseases and their causal agents, and insect, nematode or weed pests of specific plants. Each guide discusses: symptoms and signs; pathogen or pest names; host range; geographic distribution; methods for isolating and identifying the pathogen or pest, storage of the pathogen/pest, conducting host range/pathogenicity tests; taxonomic references; and general references. These articles should be illustrated with high-quality color photographs of the symptoms and pathogen or pest structures associated with the problem. Diagnostic guides should not exceed 3,000 words in length.

Diagnostic guides should adhere to the format below (a very close adaptation can be used for disorders or conditions for which the format’s categories do not apply):

**HOST(S):** List the common names of the primary economic hosts followed in parenthesis by the scientific name of each host

**DISEASE:** Give the official common name of the disease as listed in the *Common Names for Plant Diseases* (American Phytopathological Society Committee on the Standardization of Common Names for Plant

*article continues on page 12*

## Irrigation Pathogens and Water Quality USDA | | NIFA



A webinar series on irrigation pathogens and recycled water quality is being offered through Virginia Tech from 10/8/13 – 11/4/13. The latest research will be presented on issues surrounding crop health, agricultural water security and our environmental footprint. For a schedule of the webinar classes, as well as, information on how to connect to the sessions, go to [www.irrigation-pathogens.ppws.vt.edu/webinar/index.php](http://www.irrigation-pathogens.ppws.vt.edu/webinar/index.php). All webinar sessions will be held from 12:00 noon to 1:00 pm Eastern Time and can be accessed at <https://connect.extension.iastate.edu/irrigation-water/>.

This project is sponsored through the Specialty Crop Research Initiative of USDA National Institute of Food and Agriculture. It is a partnership between seven institutions and the ornamental horticulture industry in pursuit of better plant quality and productivity while promoting containment and recycling of irrigation water to protect and conserve natural water resources.

## Suggested Online Resources for Determining “First Report Status”

Tom Creswell, Plant & Pest Diagnostic Lab, Purdue University, Melodie Putnam, OSU Plant Clinic, Oregon State University and Gail Ruhl, Plant & Pest Diagnostic Lab, Purdue University

When encountering a pathogen on a host for the first time you may wonder whether it is something new in your state or for the US.

If you are considering working on a pathogen to write a first report your search should always include an in-depth search of CAB abstracts and/or Agricola for the host genus in combination with the pathogen genus. Don't forget to check for synonyms of the pathogen name. These databases are usually available online via a university subscription (check with your university library).

Also take a look at the NPDN database (<https://npdn.ceris.purdue.edu/index.php>) in the pest/host index section. The database will provide the number of times that a particular pathogen or insect has been submitted on a specific host plant (confirmations only). Finding a pest/host combination listed in the NPDN database doesn't mean it has been reported in a publication but if you learn it has been uploaded multiple times then it's less likely to be a “new” report.

Below are some specific resources for searching, grouped by pathogen type:

### FUNGI:

- “The Big Red Book”: Fungi on Plants and Plant Products in the United States: ARS database: <http://nt.ars-grin.gov/fungaldatabases/fungushost/fungushost.cfm>

This is the gold standard for reports of fungi and includes international reports also.

- MycoBank ([www.MycoBank.org](http://www.MycoBank.org)) includes geographic information for those fungi deposited in the Centraalbureau voor Schimmelcultures (CBS).

### NEMATODES:

- ARS-USDA Nematode Collection Database: <http://nt.ars-grin.gov/nematodes/search.cfm>

## TIP OF THE MONTH

- Ferris Nematode Index: <http://plpnemweb.ucdavis.edu/Nemaplex/HostLists/hoststatusindex.htm>
- Nemabase: <http://plpnemweb.ucdavis.edu/Nemaplex/Nemabase2010yesterday/Nemabase%20Search%20Menu.htm>

**VIRUSES:** [www.dpvweb.net/index.php](http://www.dpvweb.net/index.php)

### BACTERIA:

There is no single good online resource for bacterial plant pathogens but J.F. Bradbury's ‘ancient’ 1986 text “Guide to Plant Pathogenic Bacteria” (CABI Press) has an appendix with host information for bacteria. It is dated, but it is one of few resources for bacteria, and captures older information, which might not be in online databases. Bradbury published a second edition with joint author G.S. Saddler but both editions are currently out of print and difficult to locate.

### OTHER RESOURCES:

Sometimes international reports can lead to references to reports within the US:

- [www.ndrs.org.uk/](http://www.ndrs.org.uk/) (British Society of Plant Pathology new reports)
- Finally Google Scholar is sometimes helpful: <http://scholar.google.com/>

Read more about the importance of writing up first reports at: [www.plantmanagementnetwork.org/pub/php/review/2009/biogeography/](http://www.plantmanagementnetwork.org/pub/php/review/2009/biogeography/)

USDA ARS Agricultural Research Service

ARS Home | About ARS | Help | Contact Us | En Español

Fungal databases - Fungus-Host Distributions

Genus Species

Fungus Name    Include vars ?

Or Fungus Group  ?

Or Fungus Order  ?

Host Name   ?

Or Host Family  A-B C-E F-L M-P Q-Z ?

English Español

A new option, Locality, has been added to the Display options. This will sort the results by geographic location.



## Using the Get Started Implementation Booklet to Establish the STAR-D Laboratory Accreditation

### System in your Laboratory; Step 1

*Karen Snover-Clift, National Quality Manager and Dawn Dailey O'Brien, NPDN Quality Coordinator, NEPDN, Cornell University*

Last month, we reviewed the APS-NPDN Town Hall Meeting and told you about a new tool now available to diagnosticians interested in beginning the implementation of STAR-D activities in their laboratories. As you may recall, the “STAR-D: How to Get Started in Your Laboratory” booklet was designed to help lab managers and diagnosticians prepare and begin following the requirements and standards of the NPDN STAR-D Laboratory Accreditation Program. The booklet is available at the STAR-D webpage in a PDF format at [www.npdn.org/webfm\\_send/2018](http://www.npdn.org/webfm_send/2018). Those that participated in the Town Hall meeting received a hard copy of the booklet. If you were unable to attend and want a hard copy, spiral bound version of this booklet, please contact Karen or Dawn. It was so popular, we used up most of the first printing already and we want to determine if a second printing is needed so let us know of your interest.

We know that the idea of implementing such a complex system can be daunting but if you break it down into manageable segments, it seems much easier and this might be the best way to begin the process. We will review each of the eight sections of the Get Started booklet in the STAR-D Quality Corner feature over the coming months. This month will begin with Step 1



Step one begins with a couple of definitions and three activities. All you need to do to get started is set a goal date to accomplish each of these activities. When completed, post the date you achieved each activity. Checking off each item provides a great sense of accomplishment!

#### What is STAR-D?

STAR-D is NPDN’s laboratory accreditation system that was created based on ISO-17025 standards but was customized to meet plant diagnostic laboratory needs and, to the extent possible, follow nationally agreed upon standards and procedures. These can be found

in the NPDN STAR-D Requirements and Standards documents, NPDN-SYS-900.

#### Why STAR-D?

STAR-D was created to provide an assessment of laboratories within the NPDN system. Accreditation through the STAR-D program signifies that a laboratory has met essential requirements and standards which results in a conformity of test results, handling and reporting, regardless of which NPDN laboratory is used for processing.

#### Activities:

- ★ Discuss with lab members what activities should be included within your accreditation and define your scope.
- ★ Determine a good time of year when you can dedicate time to begin implementing STAR-D.
- ★ Read system documentation that will help you implement STAR-D in your laboratory. Start with the NPDN Requirements and Standards and the Quality Manual template.

Step one also includes a Helpful Hints section. These are items that a few of the diagnosticians that have started this process pointed out as useful information. All you need to do here is review the hints, think about if any of the hints pertain to you or your laboratory and if you like a provided suggestion, discuss it with your laboratory members.

#### Helpful Hints:

- Your lab probably has a system for doing business that is already effective, but may be informal and undocumented. Take what you already have and organize it following the standards.
- Understanding how certain terms are used within laboratory accreditation systems will help you while implementing your system.
  - E.g. Should, May, Can = Recommended
  - Shall, Must, Will = Required
- Remember to tell yourself often: “We need to start the process and although not every document, form or procedure may be perfect, we are getting started.”
- Think of this process and system as an improvement opportunity — once the base system is in place, you should pick an area or two each year to improve.

Please contact us with any questions! Next month we will proceed to Step 2...How to Get Started — Get Set...Go! 🍀

## Weed Seedling Identification Guide for Montana and the Northern Great Plains

Fabian Menalled, Department of Land Resources and Environmental Sciences, Montana State University



Researchers and Extension specialists at Montana State University have developed the “Weed Seedling Identification Guide for Montana and the Northern Great Plains,” a new free, color publication to help farmers, land managers, ranchers and those interested in preserving Montana ecosystems, identify weed and invasive plants at the seedlings stage.

The weed seedling guide provides information on 73 species, including 60 forbs (broadleaf) and 13 grass species. Each species includes a photo of the cotyledon leaves, first true leaves (Figure 1), rosettes (where applicable), mature plants and seeds. Color coding, and icons indicate whether the plant is primarily cropland or rangeland, life cycle, leaf arrangement and cotyledon shapes (forbs); and ligule characteristics (grasses).



© Hilary Parkinson

Figure 1. Redroot pigweed, *Amaranthus retroflexus*, demonstrating linear cotyledon leaf shape, first true leaves and red leaf underside (a helpful diagnostic feature).

This information will allow the user of the guide to efficiently narrow down the options and expeditiously identify the weed seedling in question. The guide also provides a glossary and line drawings to help readers identify weed seedlings.

Rapid and accurate identification of weeds at the

seedling stage is the first step in the design of a successful integrated weed management program that saves producers and land managers time, money and reduces herbicide use in the environment. How does weed seedling identification provide these benefits? First, weed management is typically much easier, less costly, and more effective when the plant is a seedling or juvenile (e.g. rosette) compared to when it is mature. Second, controlling a weed during early growth stages may release neighboring, desired vegetation from competitive suppression by the weed, thereby improving overall plant community vigor. Finally, improper identification can result in misapplication of a management tool such as herbicides or failure to adequately control the weed at the time that it is most vulnerable to integrated weed management practices. While almost all weed identification guides provide information of the mature stage of the plants, very few guides focus on the seedling stage or are not specific to our region. The goal of the weed seedling guide is to fill these gaps and help citizens of Montana and the Northern Great Plains manage and identify weeds and invasive plants.

To get a copy of the guide, go to the MSU Extension publications website, [www.msuextension.org/store](http://www.msuextension.org/store). You can also contact the authors of the guide, Hilary Parkinson ([hilary.parkinson@montana.edu](mailto:hilary.parkinson@montana.edu)), Jane Mangold ([jane.mangold@montana.edu](mailto:jane.mangold@montana.edu)), or Fabian Menalled ([menalled@montana.edu](mailto:menalled@montana.edu)). 🌱

Asian Longhorned Beetle confirmed in Babylon Township on Long Island. Read more in NPDN Regional News!



## New Digital Identification Tool

Terrence Walters, USDA-APHIS-PPQ-S&T-FCL-ITP Coordinator and Amanda Redford, USDA-APHIS-PPQ-S&T-FCL-ITP Tool Developer

USDA-APHIS's Identification Technology Program (ITP) is pleased to announce the release of its latest identification tool, *Microlepidoptera on Solanaceae*. This identification tool focuses on the two largest taxonomic groups of moths that feed on solanaceous crops (e.g., eggplant, potato and tomato) and is the first publication that brings information about these species together. *Microlepidoptera on Solanaceae* offers an interactive key, fact sheets, descriptions and images to aid in the identification of these important pests.

*Microlepidoptera on Solanaceae* was designed to support growers, domestic crop surveyors and identifiers, USDA-APHIS-PPQ identifiers and members of the NPDN. Foreign regulatory officials and users may find the tool useful as it covers several exotic species.


ITP Collaborators: Florida Department of Agriculture and Consumer Services, Arizona State University, Agriculture and Agri-Food Canada and Senckenberg Natural History Collections Dresden

Authors: J.E. Hayden, S. Lee, S.C. Passoa, J. Young, J.-F. Landry, V. Nazari, R. Mally, L. Somma and K.M. Ahlmark

Funding Support: Section 10201 of the 2008 Farm Bill 

<http://idtools.org/id/leps/micro/>

# Microlepidoptera on Solanaceae



<p><b>About the tool</b></p> <p>This website is designed to improve the ability of plant inspectors and diagnosticians to identify larval and adult Microlepidoptera that feed on plants in the family Solanaceae.</p>	<p><b>Illustrated glossary</b></p> <p>For users less familiar with lepidopteran terminology, this tool includes an illustrated glossary. Click on a term to view an image, or scroll through the glossary gallery.</p>	<p><b>Specimen preparation</b></p> <p>Many features in the key require dissection or microscopic examination. Basic techniques to prepare and mount your specimen for examination can be found here.</p>
--	--	--

If you are interested in *Microlepidoptera on Solanaceae*, you also might be interested in the following ITP products. Note, to view all ITP tools, visit <http://idtools.org/>. To view all ITP Lucid Mobile Android apps currently available, via the Google Play Store, visit [USDA-APHIS-ITP Lucid Mobile Apps](#).

### TortAI: Tortricids of Agricultural Importance

Web application: <http://idtools.org/id/leps/tortai/>

Lucid Mobile application (Android, *TortAI Key*): [USDA APHIS ITP Lucid Mobile TortAI](#)

### Citrus Pests

Web application: [www.idtools.org/id/citrus/pests/](http://www.idtools.org/id/citrus/pests/)

Lucid Mobile application (Android, *Citrus Pests Key*): [USDA APHIS ITP Lucid Mobile Citrus Pests](#)



**TortAI Key**

LucidMobile - September 26, 2013

Education

Install

 Add to Wishlist

This app is compatible with all of your devices.



**Citrus Pests Key**

LucidMobile - September 25, 2013

Education

Install

 Add to Wishlist

This app is compatible with all of your devices.

## Incorporation of the Standard Scientific Name for Fungi into the National

**Repository** *Nancy Gregory, Department of Plant & Soil Sciences, University of Delaware, Mike Hill and Eileen Luke, CERIS, Purdue University*

Accurate scientific names are critical in unlocking and using information. In particular, there is a significant need for a systematic bank or standardized list of proper names for pests or pathogens. As a result, NPDN formed the NPDN National Database Committee several years ago and has been hard at work creating a working list of standardized names for the NPDN Pest Dictionary. More recently a new international standard naming convention for fungi has been developed. No matter where the fungal pathogen is discovered, it is important that it is consistently identified, labeled and referenced. This helps to provide an accurate sharing of information and prevent miscommunication in pest screening. Previously, fungi were named according to the International Code of Botanical Nomenclature, but a new naming convention, the International Code of Nomenclature of Algae, Fungi and Plants (ICN) has been adopted in 2013. The new system of naming fungi addresses the confusion when two or more different scientific names are used for the same genus or species. As of January 1, 2012, Latin diagnosis was no longer required and new taxa can be published electronically. As of January 1, 2013, new names of fungi must be registered in MycoBank and only one name will be

used for fungi. The concept is simple, but the new naming convention will need to be implemented and associated synonyms should be developed in order to provide the “best” working list to the diagnosticians.

Working collaboratively, the University of Delaware, USDA-ARS and Purdue University were awarded funding for a Farm Bill suggestion to incorporate the new naming convention into the NPDN database. USDA-ARS provides the subject matter expertise and standardized lists and Purdue University is developing the software to incorporate the new naming convention with synonyms and search capabilities. The diagnosticians under Amy Rossman’s and Nancy Gregory’s leadership are providing guidance, advice and education to the IT group at Purdue to ensure that the updated standard fungal names are used and associated synonyms are properly stored in order to provide consistent and accurate search capabilities and reporting methods. A completely isolated test area has been set up for the design with prototypes being developed to demonstrate functionality. The initial reviews are being done by the plant pathologists at USDA-ARS and University of Delaware and then the next phase of review will be done by the NPDN National Database committee. Stay tuned for more information as this project develops. If you have questions on this, please contact Nancy Gregory ([ngregory@udel.edu](mailto:ngregory@udel.edu)), Mike Hill ([mikehill@purdue.edu](mailto:mikehill@purdue.edu)) or Eileen Luke ([lukee@purdue.edu](mailto:lukee@purdue.edu)). 🌿

### Samples are urgently needed!

These deadly pathogens are on a killing spree: destroying favorite garden plants across the US. To send samples or learn more, go to: [www.OrnamentalPathology.com](http://www.OrnamentalPathology.com)

Scientists from numerous universities, governmental labs and industry have joined together in order to find solutions to these diseases. Help track them down!

### Help us find these five fiendish foes!



USDA CROUCH Lab, USDA-ARS  
[www.OrnamentalPathology.com](http://www.OrnamentalPathology.com)

# TRAINING AND EDUCATION

## UF Mobile Sites, Citrus Pests and Diseases Recently Released

Amanda Hodges, Department of Entomology and Nematology, University of Florida

Did you know that UF's Institute of Food and Agriculture (IFAS) Application Development Team has a mobile website? Go to <http://m.ifas.ufl.edu>. You need to be on a mobile device (e.g., your smart phone or tablet) to open the site. The site includes a link to an employee directory, DDIS (UF/IFAS Extension digital system for pest and disease diagnosis of plants), EDIS (UF's electronic extension publications), FAWN (Florida Automated Weather Network), and various identification resources. The latest identification resources include the fact sheets associated with the citrus disease LUCID tool (<http://idtools.org/id/citrus/diseases/>) and the citrus pest LUCID tool (<http://idtools.org/id/citrus/pests/>).

Production of both LUCID tools was funded by USDA-APHIS-PPQ. Project coordinators for the LUCID tools included: Terrence Walters and Amanda Redford, USDA-APHIS-PPQ-CPHST. Authors of the Citrus Diseases LUCID tool included: Dr. David Serrano, Broward College; Dr. Ester Serrano, USDA-APHIS-PPQ; Dr. Megan Dewdney, UF Citrus Research and Education Center; and Christina Southwick, USDA-APHIS-PPQ-CPHST. Authors of

the Citrus Pests LUCID tool included: Sarahlyne Guerrero, Dr. Jennifer Weeks, Dr. Amanda Hodges, and Dr. Norman Leppla of the UF Department of Entomology and Nematology. Dr. Kirk Martin, USDA-APHIS-PPQ is also a co-author of the Citrus Pests LUCID tool. Authors of the LUCID tools are also authors of the mobile websites and apps.



Primary development of the citrus diseases and pests mobile websites was by Navya Kooram, UF-IFAS Application Development Team. These mobile websites are currently being submitted to Apple and Android as apps. Production of the Citrus Diseases and Pests apps was funded by a USDA-NIFA grant entitled "New Technologies and Educational Material to Address National Emerging Citrus Pests and Citrus Diseases." Project Directors for the grant included Dr. Amanda Hodges and Dr. Norman Leppla, UF Department of Entomology and Nematology. Citrus Diseases and Pests apps is a multi-state project.

Subcontract Project Directors include: Dr. Elizabeth Grafton-Cardwell, University of California-Riverside and Dr. Mamoudou Setamou, Texas A&M University. Dr. Gurpreet Brar, UF Department of Entomology and Nematology, is serving as the project coordinator. Graphic design specific to the Citrus Diseases app and Citrus Pests app was provided by Kay Weigel, UF Department of Entomology and Nematology. 🍃

Save the Date! The Sentinel Plant Network (SPN) will be debuting new resources for front line horticulturists and plant health care professionals through another series of regional workshops this winter. Content will include new materials on emerging pest / pathogen threats, diagnostic aides for triage, as well as, training on various smartphone apps for scouting / reporting. If you are interested in participating in one of these regional workshops contact Rachel McCarthy at [rachel.mccarthy@cornell.edu](mailto:rachel.mccarthy@cornell.edu).

### UPCOMING EVENTS

North Central region: December 11 & 12, 2013 at Powell Gardens in Kingsville, MO

Northeastern region: January 21 & 22, 2014 at New England Wild Flower Society in Framingham, MA

Stay tuned for more information including details for workshops in the northwest and southern regions.





## Stop Stink Bug Project

USDA Blog

Calling all insect enthusiasts and frustrated gardeners! USDA scientists need your help in documenting brown marmorated stink bugs (BMSB) in your home. Beginning September 15<sup>th</sup> through October 15<sup>th</sup>, we're asking citizens



© Stephen Ausmus, USDA-ARS

The brown marmorated stink bug, a winged pest from Asia that is eating crops and infesting U.S. homes. USDA-ARS scientists are launching a campaign to ask volunteers to count the number of stink bugs in their homes.

across the Mid-Atlantic region of the United States to record daily counts of this pest on the exterior of their homes, along with their location and the time of each count. While USDA scientists are focusing on the Mid-Atlantic region, any data they can get from other US regions would also be helpful to their research.

See more at: <http://blogs.usda.gov/2013/09/13/stop-stink-bug-project/#sthash.Gvh8jFhk.dpuf>

## EAB University—Fall Webinar Series

### Invasions by Non-native Insect Pests and Arboriculture

Thursday, September 26, 2013 at 11 am ET  
*Mike Raupp, University of Maryland*

### EAB Biocontrol Progress and Possibilities

Thursday, October 10, 2013 at 11 am ET  
*Juli Gould, USDA-APHIS*

### US Regulatory Measures to Control Invasives and Limit Introductions using the Case Study of ALB in Massachusetts

Thursday, October 24, 2013 at 11 am ET  
*Clint McFarland, USDA-APHIS Federal Project Manager, ALB Eradication Program-Massachusetts*

### Building an EAB management program from the ground up: Milwaukee's perspective

Thursday, November 7, 2013 at 11 am ET  
*Randy Krouse, City of Milwaukee*

### Economic impact and management of EAB in woodlots, classic wood utilization

Thursday, December 5, 2013 at 11 am ET  
*Eric McConnell, The Ohio State University*



Northeast Plant Diagnostic Network

## Asian Longhorned Beetle Confirmed in Babylon Township, NY

APHIS Newsroom

On September, 12, 2013, USDA-APHIS and the New York State Department of Agriculture and Markets (NYSDAM) announced that surveys are under way in several neighborhoods located in the northern portion of Babylon Township in Long Island, N.Y.

An alert homeowner reported a suspicious insect to State officials by providing a photograph and

video clip of the live insect on their property. APHIS confirmed the insect was ALB. This is the first detection of the invasive pest outside the existing Suffolk County regulated area.

To date, 69 infested trees have been identified. Three infested trees and one high risk tree located along Wellwood Avenue have been removed. The remaining infested trees located on the grounds of St. Charles/Resurrection Cemeteries, as well as in and around Republic Airport will be removed in the coming weeks.

## REGIONAL NEWS

The ALB eradication program is proceeding with intensive property-by-property tree survey inspections. Crews will use ground surveyors and specially trained tree climbers to inspect host tree species that are susceptible to ALB for signs of the wood-boring beetle.

Pheromone traps are being placed in the neighborhoods to aid in early detection. So far, 23 traps have been placed in the canopies of host trees. Although traps are part of ongoing research, the traps have caught beetles in Massachusetts and Ohio, and additional infested trees have been found after surveying near areas where traps were placed.

Program representatives are speaking with homeowners to obtain history on any tree removals or tree care companies working in the area, and they are also visiting establishments that routinely handle host tree material or imported freight from China. These visits will help the program to trace the origins of the infestation.

The most important thing you can do to protect your trees is to check them regularly and encourage others to do so, too. Early detection is crucial in the fight against this invasive pest. Residents are encouraged to check their trees, report any sightings of the beetle or signs of damage that it causes, or notify the program if any trees or tree debris has been moved from their properties.



Adult beetle with exit hole.

© beetlebusters.info via flickr

To learn more about ALB host trees, signs and symptoms visit [www.asianlonghornedbeetle.com](http://www.asianlonghornedbeetle.com). To report signs or symptoms of ALB, please call the New York ALB Eradication Program toll free at (866) 265-0301 or (877) STOP-ALB, or report online at [www.asianlonghornedbeetle.com](http://www.asianlonghornedbeetle.com).

To read this full official announcement visit the APHIS Newsroom at [www.aphis.usda.gov/newsroom/](http://www.aphis.usda.gov/newsroom/). 🌿

## New Hort Tips No. 7

Mary Kay Malinoski, Home and Garden Information Center, University of Maryland

The latest issue of University of Maryland’s Home and Garden Information Center’s *Hort Tips Newsletter* is now available! Volume 1, Number 7 features information on new pests in Maryland’s landscape including kudzu bug and Japanese cedar longhorned



Adult kudzu bugs on soybean.

© Jeremy Greene, Clemson University, Bugwood.org

beetle. Also featured is information on bacterial leaf scorch on oak. Bacterial leaf scorch is a relatively new disease of shade trees in Maryland and affects a large number of trees. The pathogen is a bacterium that grows inside the plant’s vascular tissue where it blocks water movement from the roots. The organism, *Xylella fastidiosa*, is a small gram negative bacterium with no flagella. This bacterium is spread by plant hoppers called sharpshooters, treehoppers and spittlebugs that feed on infected plants and after feeding the bacterium will spread systemically through the vascular system. Symptoms typically appear in mid to late summer on lower branches as irregular marginal browning on interior leaves.

The current and previous issues can be found at: <http://plantdiagnostics.umd.edu/content/educational-resources.cfm>. 🌿

## SPDN Regional Meeting

Carrie Harmon, Associate Director SPDN, University of Florida

The SPDN will have their regional meeting in Gainesville, Florida, at the new UF Plant Diagnostic Center, October 22–24. Along with regional updates on disease occurrences, personnel changes, training opportunities, and funding information, we plan to include a roundtable discussion regarding the state of molecular diagnostics and practical application of molecular tools in our labs. Questions can be directed to Carrie L. Harmon at [chharmon@ufl.edu](mailto:chharmon@ufl.edu).



## WPDN First Detector News – 2013 Summer Edition is Posted!

Dick Hoenisch, WPDN Training and Education Coordinator, UC Davis

The brown marmorated stinkbug (BMSB) has continued its inevitable spread and was found in early September in downtown Sacramento CA, just south of the state capitol. It has been present in southern CA south of the Tehachapi Mountains since 2006. Most of Oregon and southern Washington are already infested with this stinkbug. The BMSB is a serious threat to agriculture as well as being a structural nuisance in the fall and winter. There are two very amazing photos of BMSB “aggregating” on a tree in Sacramento. Sudden oak death (SOD) continues to spread both in the natural

environment and through the nursery trade. The article on SOD updates the scientific and the regulatory aspects of the pathogen and disease. The feature

article is about invasive fruit flies. Dr. Jason Leathers of the California Department of Food and Agriculture describes the most serious exotic fruit flies, biology, modes of entry, and regulatory action taken in response to them.

Check out the Summer 2013 edition at WPDN's newsletter page [www.wpdn.org/newsletters](http://www.wpdn.org/newsletters).



## JOB OPPORTUNITY

### IPM Communications Coordinator (Academic Coordinator III)

University of California Cooperative Extension

AP #13-22

Internet: <http://www.ucanr.edu/jobs>

Location: Davis, Yolo County, California

The University of California Cooperative Extension, a statewide program with local development and delivery, is seeking an Academic Coordinator to lead central Statewide IPM Program communications activities that are aimed primarily at developing informational products about integrated pest management for practitioners.

Working with UC Agriculture and Natural Resources (ANR) subject matter experts and others as appropriate,

continued from page 2...

Diseases. 1994. Common Names for Plant Diseases. APS, St. Paul, MN).

**PATHOGEN:** List the current scientific name of the pathogen and any important synonyms, e.g., previous names by which the pathogen was well known or under which a large body of information may have been published. For fungal pathogens, provide anamorph and teleomorph names if appropriate. For virus pathogens, list the virus and its family affiliation. It is not necessary or desirable to provide great depth on the current taxonomic state of the pathogen.

**TAXONOMY:** List and describe pertinent references that discuss the current taxonomic state of the causal agent. If possible, list electronic resources that may be used to confirm the current taxonomic status of a causal agent.

**SYMPTOMS AND SIGNS:** Start by describing those symptoms and signs of the disease most useful and characteristic for diagnosis of the disease. Expand the description to include important symptoms and signs of the disease as it develops over the growing season.

**HOST RANGE:** Describe the host range of the pathogen beyond the economic hosts listed above. Include a statement citing references for those interested in more detail.

**GEOGRAPHIC DISTRIBUTION:** Describe the geographic distribution of the pathogen in general terms. Include a statement with citing references for those interested in more detail.

**PATHOGEN ISOLATION:** For isolation of fungi and bacteria, include methods for isolation and establishment of pure cultures. Include recipes for unusual media, but not for common media such as potato dextrose agar. For nematodes, include appropriate methods.

**PATHOGEN IDENTIFICATION:** Describe the characters and techniques used to identify the pathogen in enough detail for someone unfamiliar with it to have a reasonable chance of success. Include “tricks of the trade” for working with individual pathogens and photographs or good quality line drawings of key characters.

**PATHOGEN STORAGE:** Describe methods used to preserve cultures of pathogens for both short and long-term storage. These may include microbiological

methods for fungi and bacteria or plants used to maintain cultures of viruses, nematodes, or other pathogens that cannot be cultured on artificial media. List plant species and cultivars known to be successful greenhouse hosts.

**PATHOGENICITY TESTS:** Describe the methods used to inoculate plants with a suspect pathogen. Include techniques for inoculum production, inoculation techniques, host varieties or cultivars most useful in identification, and environmental conditions for incubation of inoculated plants. Describe methods used to rate disease incidence and/or severity. Include descriptions and/or references to specialized equipment that may be used in the process.

**LITERATURE CITED:** List references for material provided above using the citation format for *Plant Disease*. References should be numbered and cited by number in the text. 🍃

## UC Davis Job continued...

the IPM Communications Coordinator plans and oversees development and production of illustrated publications, and provides leadership for the IPM Program’s online presence including Web sites, databases, online courses, and interactive decision-support tools. The Coordinator manages staff, budget, and physical resources to carry out the activities; prepares communications that publicize IPM Program products and activities; and develops communications policy and practices for the program. The position is also responsible for planning communications strategies and coordinates with other ANR units.

For information regarding this position contact: Soo Hsieh, (530) 754-8495 or e-mail [ANRacademicsearch@ucop.edu](mailto:ANRacademicsearch@ucop.edu)

PLEASE REFER TO POSITION NUMBER AP #13-22 IN ALL CORRESPONDENCE

## UPCOMING EVENTS

### National Events

November 4–13, 2013

The 9<sup>th</sup> Meeting of the Continental Dialogue  
on Non-Native Forest Insects and Diseases  
Pittsburgh, PA

November 10–13, 2013

Entomology 2013  
Austin, TX

### Training/Workshops

May 2014

Bark and Ambrosia Beetle Academy  
University of Florida  
Gainesville, FL

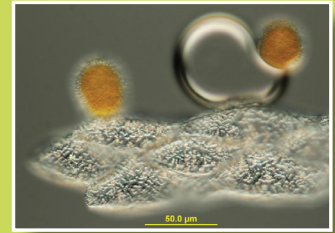


## PHOTO OF THE MONTH

quince rust

*Gymnosporangium clavipes*

peridial cells, surface view  
of two aeciospores, and air



Bruce Watt, University of Maine,  
Bugwood.org

[www.bugwood.org](http://www.bugwood.org)

## CONTRIBUTE

### Share Tips and News with Your Colleagues

Recently write an article for a trade journal? Do you have a tip, announcement, regional news or network update you would like to include in the *NPDN News*? Email Rachel McCarthy at [rachel.mccarthy@cornell.edu](mailto:rachel.mccarthy@cornell.edu)



Have a tip you would like to share with your fellow diagnosticians? Or a technique you would like to learn more about?

Email Gail Ruhl at [ruhlg@purdue.edu](mailto:ruhlg@purdue.edu)

Rachel McCarthy, Editor  
NEPDN, Training and Education Coordinator  
Cornell University



National Institute  
of Food and  
Agriculture